

October 14, 2020

# ASTM Committee Week Webcast Buildings, Communities & Resilience

## Resilience of Construction Components

Brett E. Farbstein, LEED AP, CEM, CBCP, EBCP

Senior Associate



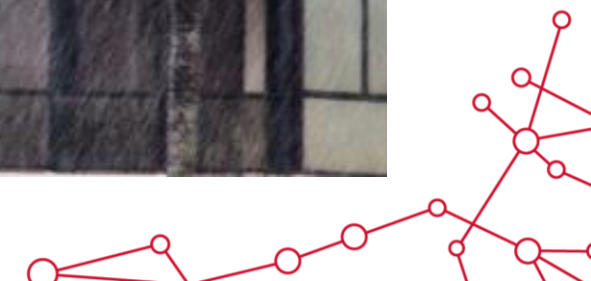


# Scales of Resiliency



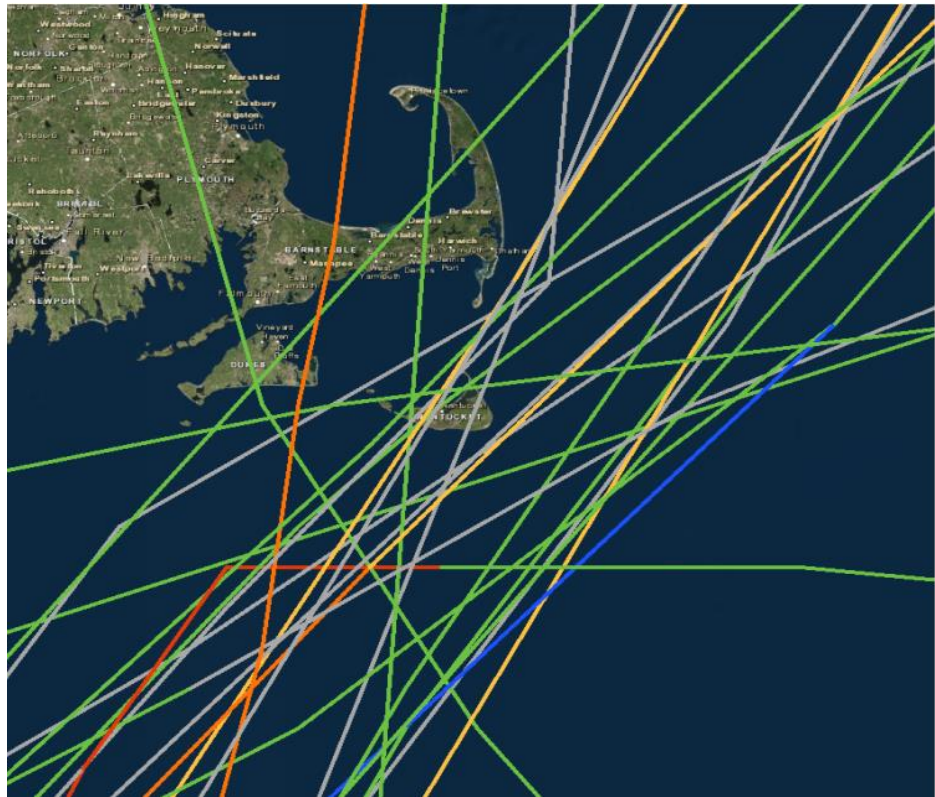
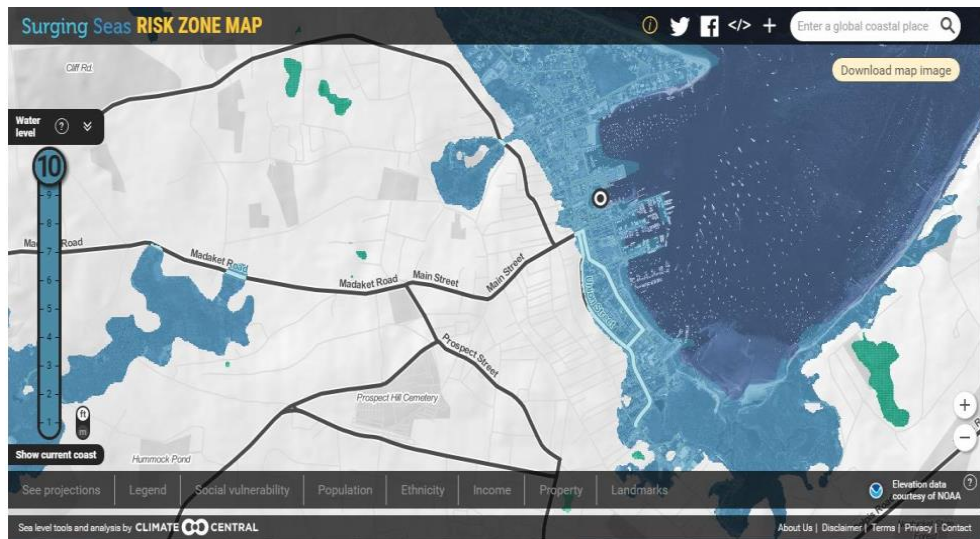
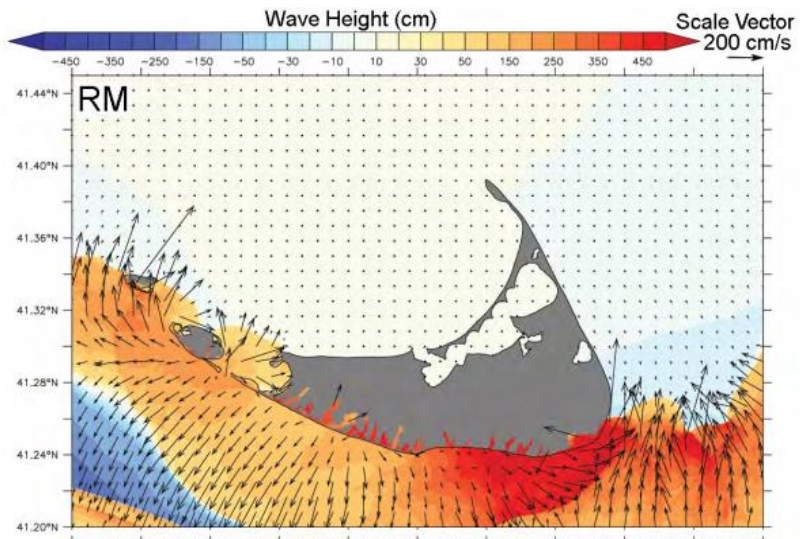
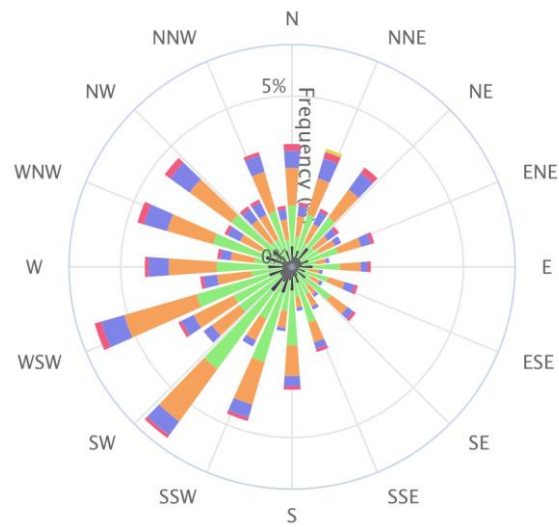


## Disturbance Risks



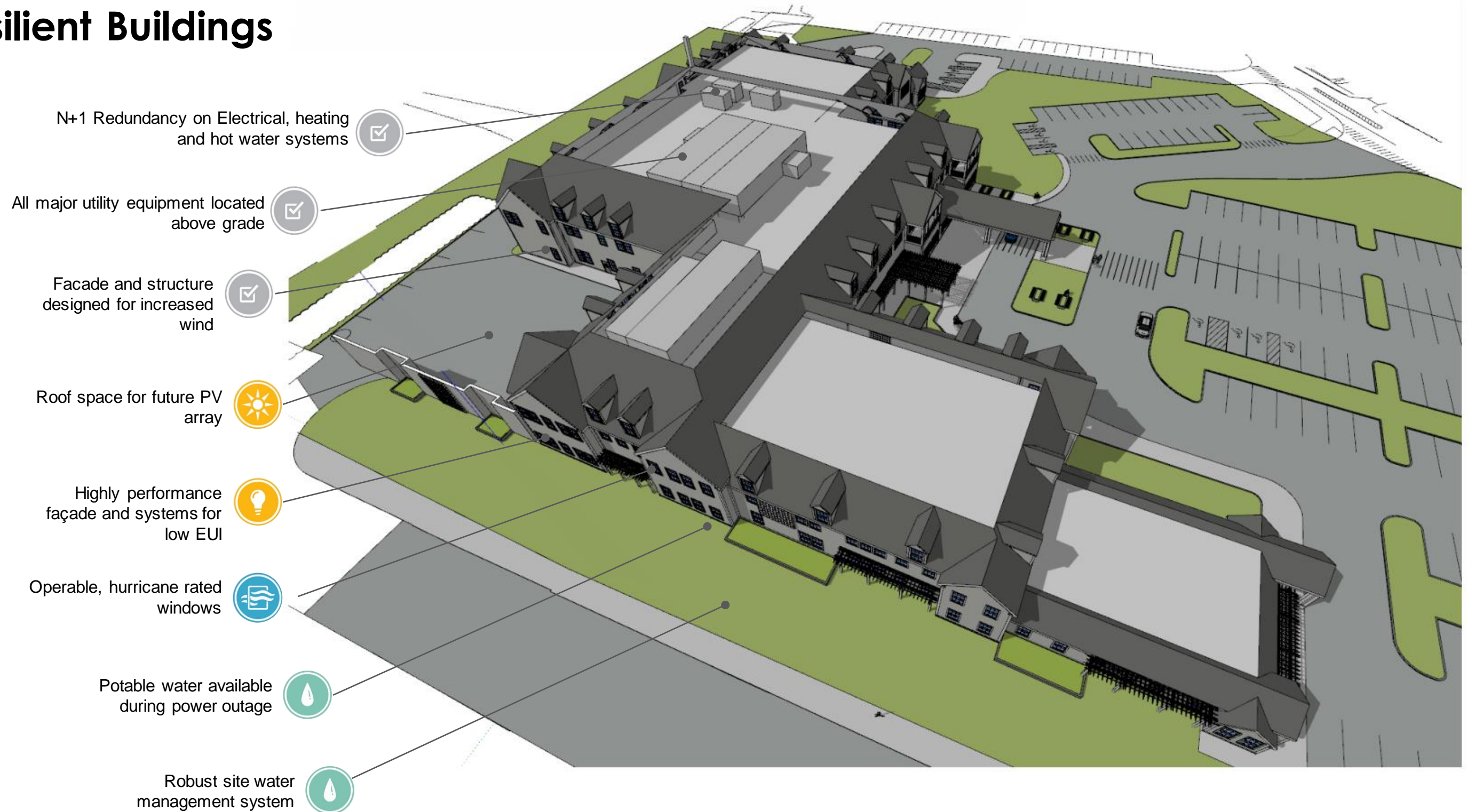


# Site Vulnerability Assessment





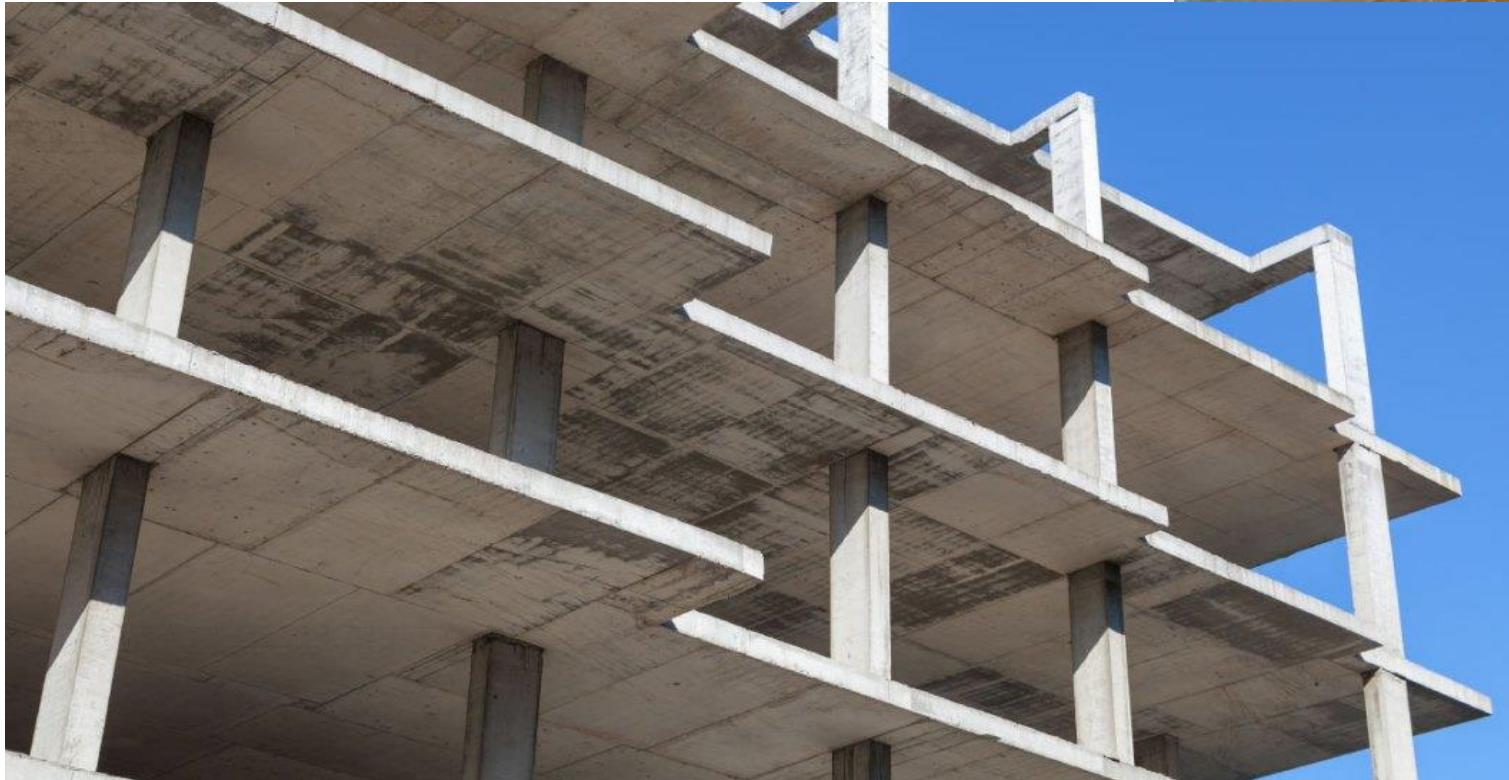
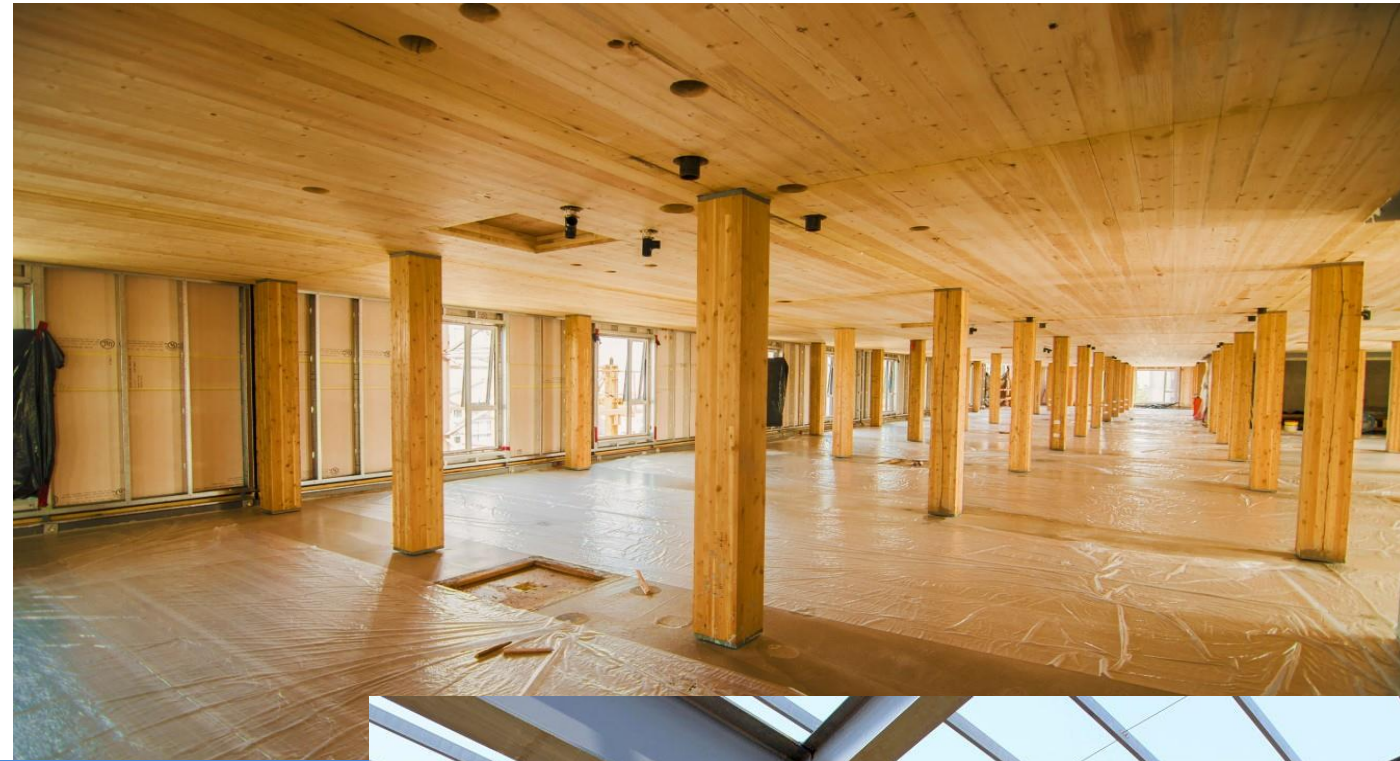
# Resilient Buildings





# Structural Systems

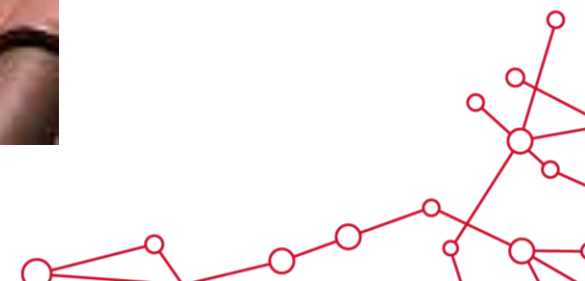
- Concrete
- Steel
- Mass Timber / CLT
- Light Wood Frame





# Roofing

- Clay and Concrete Tile
- Metal
- Asphalt Shingle
- EPDM





# Façade and Envelope Assemblies

- Curtain Wall
- Windows and Glazing
- Metal and Wood Panel Systems
- Masonry





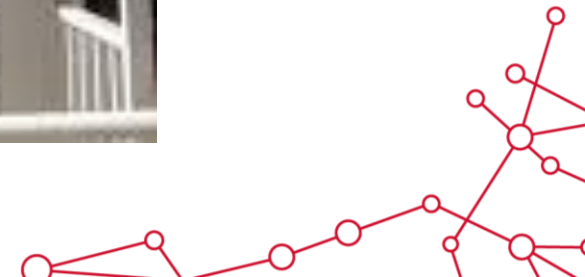
# Interior Finishes

- Gypsum Wallboard
- Flooring
- Tile





# Photovoltaic and Shading Systems





**Brett E. Farbstein, LEED AP, CEM, CBCP, EBCP**

Senior Associate

Commissioning Services Leader

617-517-6243

[bfarbstein@cannondesign.com](mailto:bfarbstein@cannondesign.com)

**CANNONDESIGN**

99 Summer Street, Suite 600

Boston, Massachusetts 02110

[cannondesign.com](http://cannondesign.com)

